

ATTACHMENT 19
Revision to Design of Proposed Project,
Architectural Drawings, Material Booklet,
And Architectural Renderings,
March 2019

RECEIVED

MAR 21 2019

**CITY OF SOUTH PASADENA
PLANNING AND BUILDING DEPT.**



239























DEMARIA
D E S I G N

PROFESSIONAL CORPORATION



RECEIVED

MAR 21 2019

CITY OF SOUTH PASADENA
PLANNING AND BUILDING DEPT.

Chan Residence
817 Orange Grove Place
South Pasadena, CA

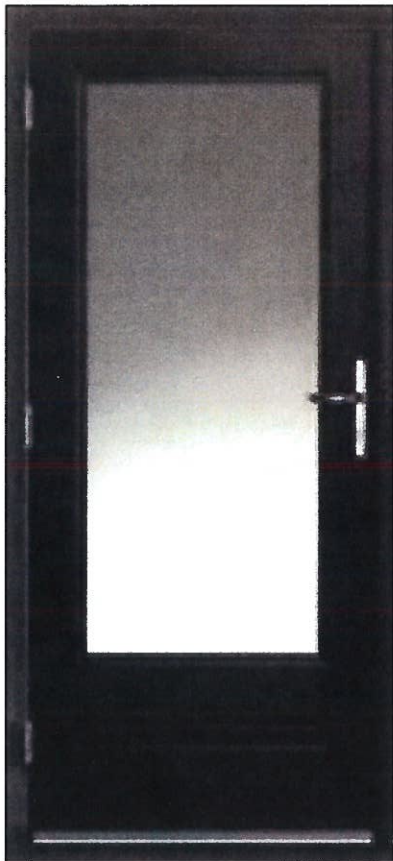
Exterior Material Booklet
March 14, 2019

LICENSED
ARCHITECT

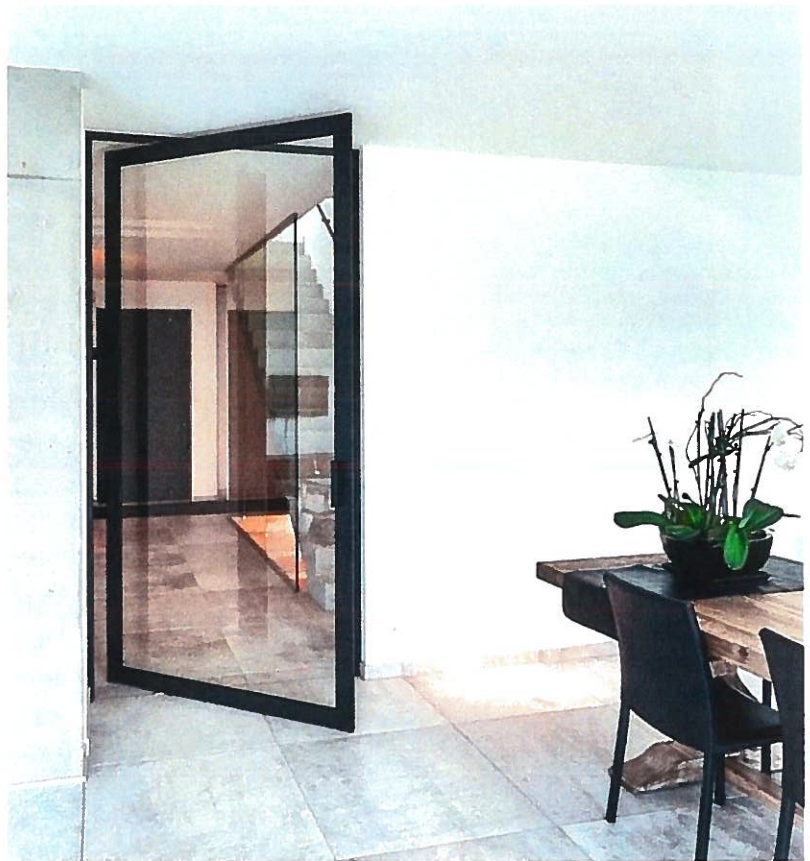
TEXAS
LIC. NO. 24742

CALIFORNIA
LIC. NO. C-23127

WWW.DEMARIADesign.COM



Front Door



Living Room and Balcony Doors



Deep-set Window and Door Jamb

ANDERSEN® PRODUCT OVERVIEW

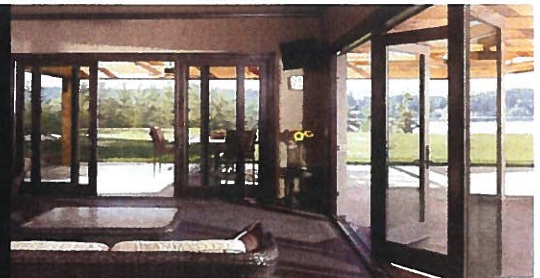
With Andersen, there are product lines for every budget, every personal taste and every architectural style. No matter which you choose, all feature the beauty, energy efficiency and durability you and your customers have come to expect from Andersen.

ANDERSEN ADVANTAGES

BIG DOORS

Our folding patio doors let the outside in. When closed, they provide a stately wall of light. When open, they fold virtually out of sight. Choose from a variety of configurations up to 48 feet wide.

Handcrafted from the finest wood available, Andersen® Entranceways add uncommon elegance to any home. Choose from rectangular or arched styles, in a large variety of solid wood or glass panel options.



200 SERIES

This streamlined selection delivers Andersen quality at an uncommon value while still offering ample choices. The Andersen 200 Series window and patio door product line concentrates on our most popular sizes and options.



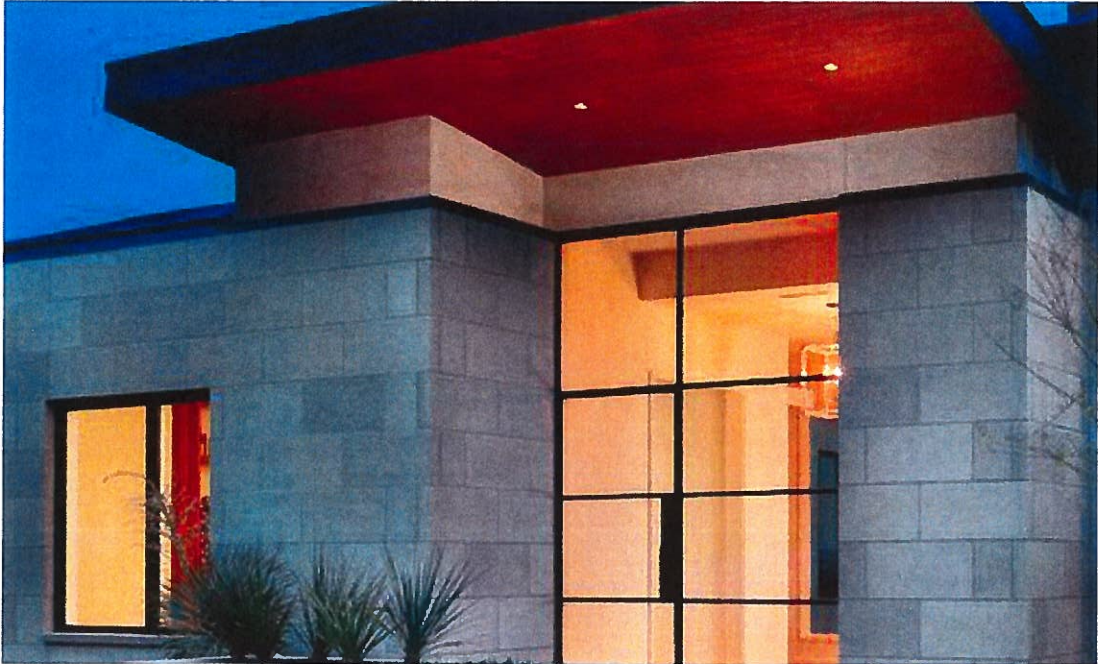


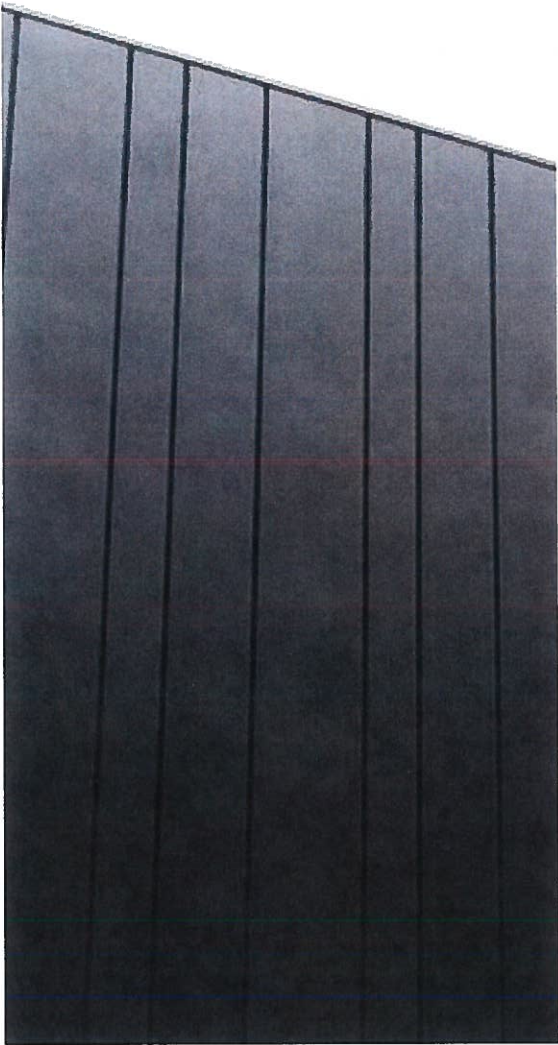
Chan Residence

EXTERIOR: SANTA BARBARA MISSION STYLE SMOOTH TROWEL STUCCO by LAHABRA



Dove Grey
40 (66)
Base 200





Chan Residence

BALCONY RAILINGS TEMPERED GLASS WITH BRASS RAIL CAP by VICEGLASS

CLEAR TEMPERED GLASS OR ALTERNATIVE OBSCURED by CR LAURENCE

